

HEALTH
NATURAL
COMFORTABLE



BOREL™ AURA



Eco
Friendly



Easy
Maintenance



Super
Wear-resistant



Anti
Slip



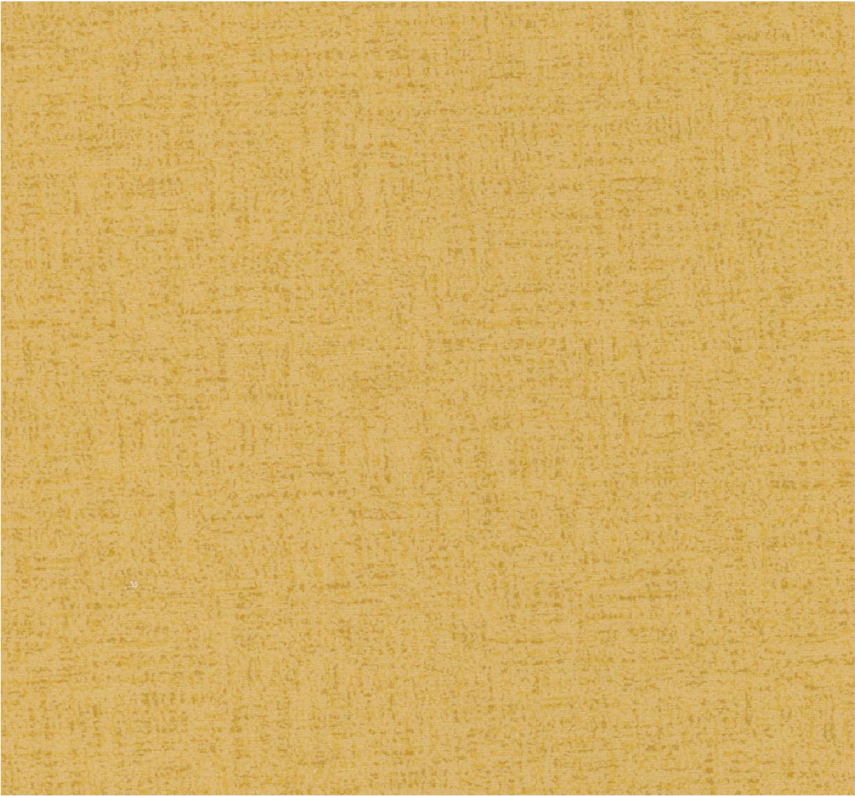
Sound
Absorbing



Anti
Bacterial



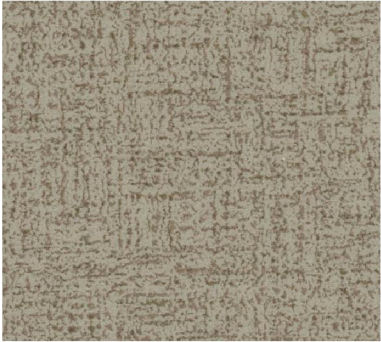
Medsom®



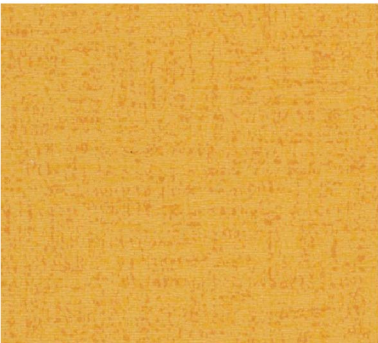
BA-3901 Sea Buckthorn



BA-3902 Desert Sand



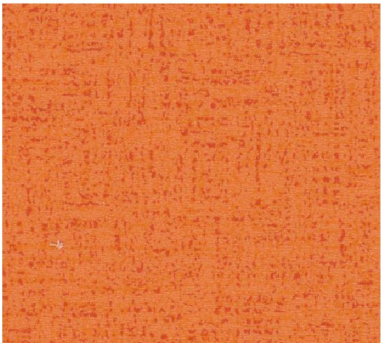
BA-3903 Creme Brulee



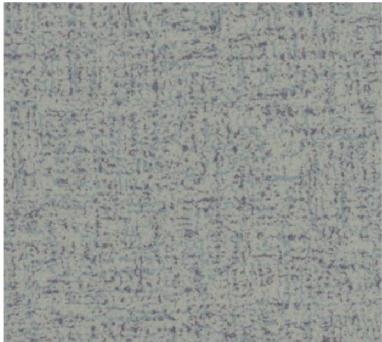
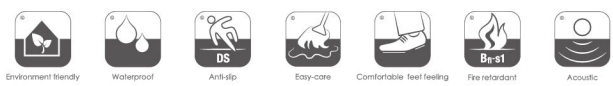
BA-3904 Bright Yellow



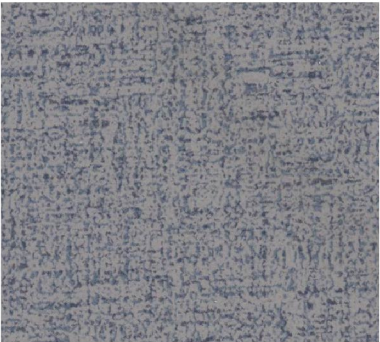
BA-3905 Tangerine



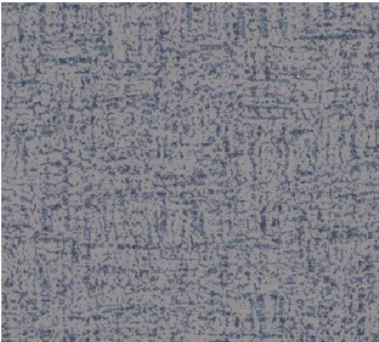
BA-3906 Alloy Orange



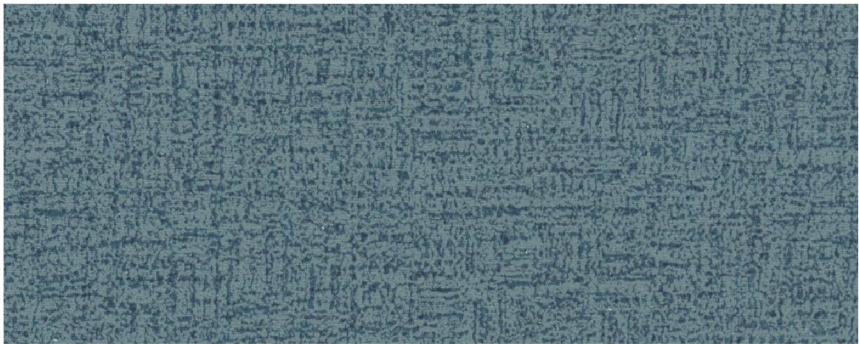
BA-3907 Lavender Gray



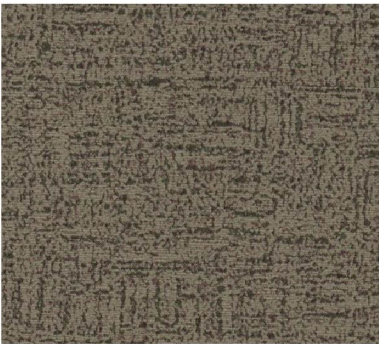
BA-3908 Manatee



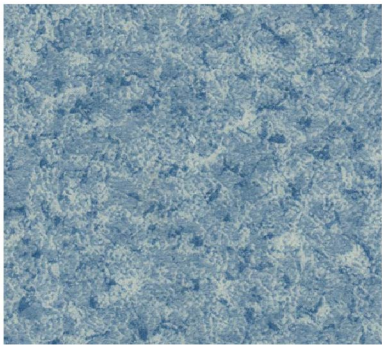
BA-3909 Auro Metal Saurus



BA-3910 Yankees Blue



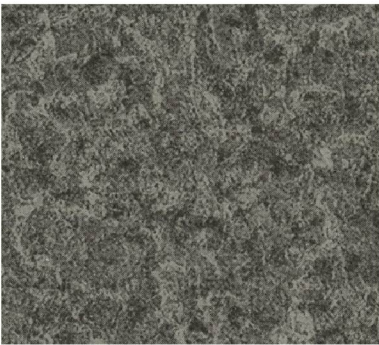
BA-3911 Roman Coffee



BA-3912 Blizzard Blue



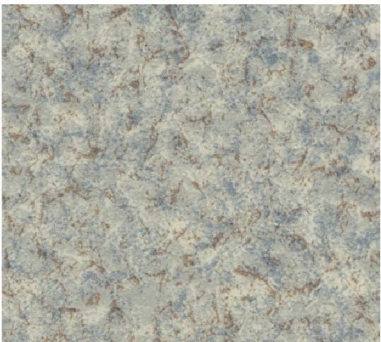
BA-3913 Blue Zodiac



BA-3914 Vampire Black



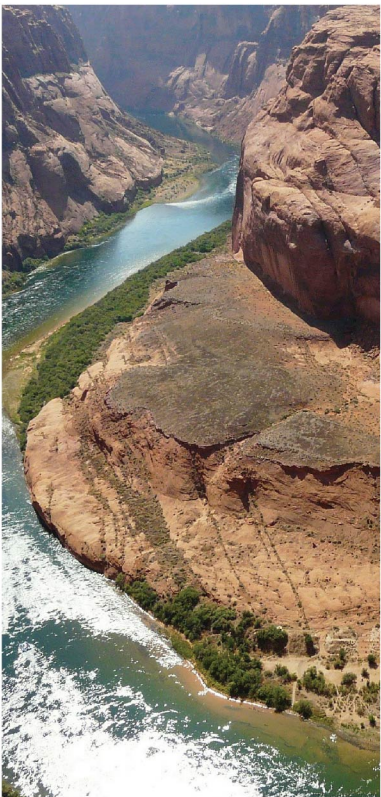
BA-3915 Deep Champagne



BA-3916 Dark Vanilla



BA-3917 Khaki



BA-3918 Gamboge

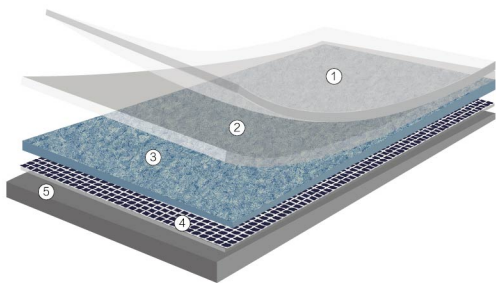


BA-3919 Arylide Yellow



BA-3920 Emerald Meadow

Product structure



- ① UV coating

② PVC Wear Layer

③ Printed Layer
- ④ Dimensional Layer

⑤ Compact Layer

1.

High Durability: Multilayer composite flooring is composed of multiple layers, which endows it with excellent wear -resistance. The top wear -resistant layer can withstand frequent foot traffic, furniture movement, and other daily abrasions, ensuring a long -service life.
3.

Abundant Design Options: With advanced printing technology, the surface of the multilayer composite flooring can imitate the textures of various natural materials such as wood and stone, offering a wide range of pattern and color options to meet different aesthetic preferences.

2.

















Good Stability: Thanks to the cross -laminated structure of different layers, the flooring has enhanced dimensional stability. It is less likely to warp, expand, or contract due to changes in temperature and humidity, making it suitable for various indoor environments.
4.

Cost -effectiveness: It combines the advantages of different materials, providing performance similar to that of more expensive flooring at a relatively lower cost, making it an affordable choice for many consumers.




BOREL™ AURA


HETEROGENOUS VINYL FLOORING

DESCRIPTION	STANDARD	SYMBOL	RESULT
Surface Treatment	-		UV
Total thickness	ISO 24346-EN 428		2.0mm
Wear layer thickness	ISO 24346-EN 429		0.35mm
Weight	ISO 24346-EN 430		3400g/m²
Width of sheet	ISO 24346-EN 426	 Compact	2m
Length of sheet	ISO 24346-EN 426		20m
Abrasion group	EN 660		T
Dimensional stability	EN 434		≤0.4%
Residual indentation	EN 433		≤0.1mm
Castor chair test	EN 425		OK
Colour fastness to light	ISO 105-B02		≥6
Slip resistance	DIN 51130		R9
Impact sound resistance	EN ISO71712		19dB
Staining resistance	ENISO 26987		OK
Reaction to fire	EN ISO 13501-1		class: Bfl -s1
Toxic testing	GB/18586-2001		Qualified


APPLICATION



Education




Shopping Malls




Offices




Retail



Kindergartens



Exhibition Halls



Libraries



Museums

ADVANTAGES



Phthalate Free



Recyclable



Easy Maintenance



Anti Bacterial



Health & Safety



Anti Slip



Sound Absorbing

